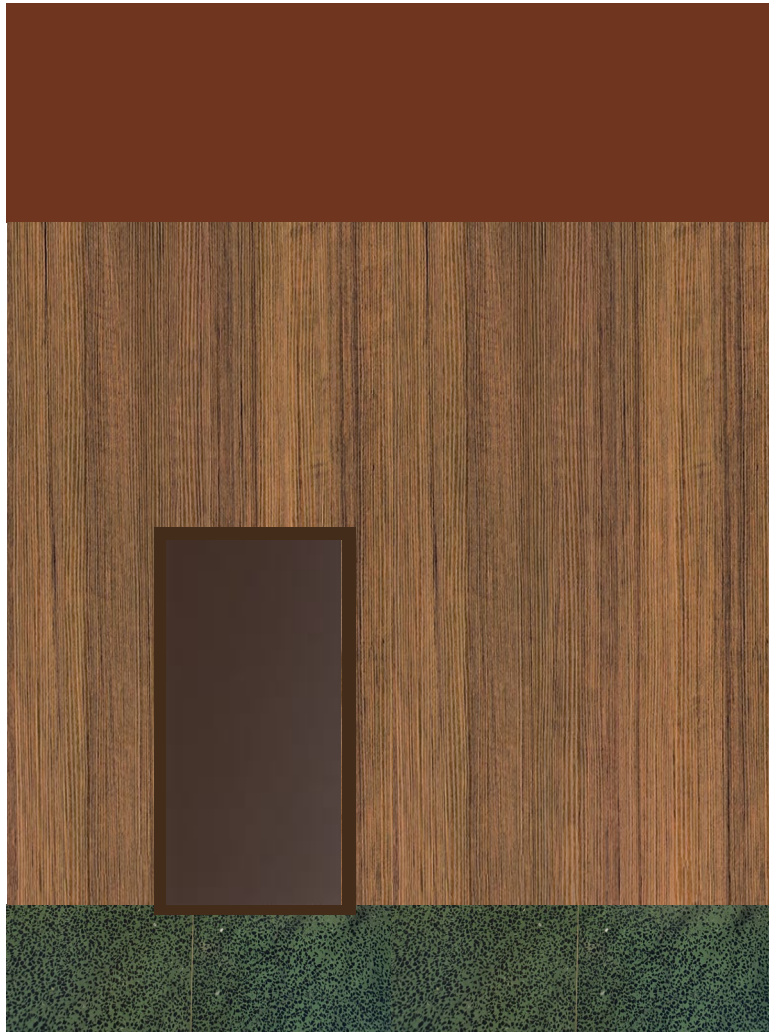


# SANDVIKA TEATER

Farge- og materialkonsept  
Fase 2

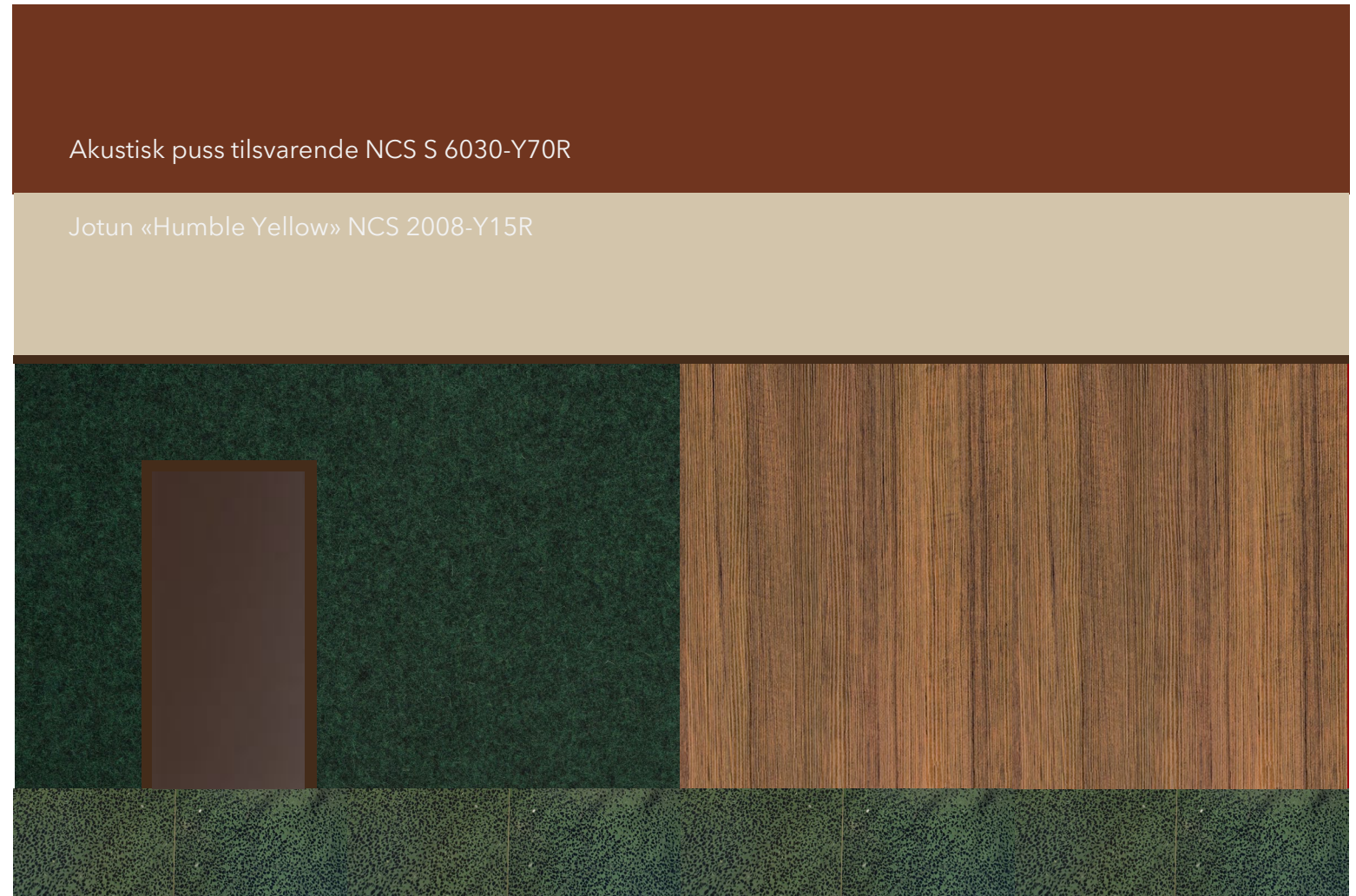


# Fargekonsept Foajé



DØRBLAD OG MALT KARM:

- F2200 Dark Chocolate
- NCS S 8010-Y50R



Akustisk puss tilsvarende NCS S 6030-Y70R

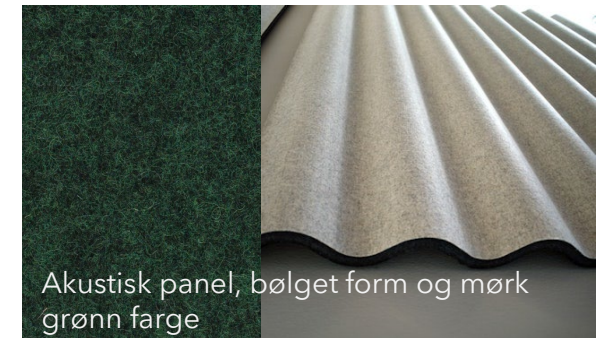
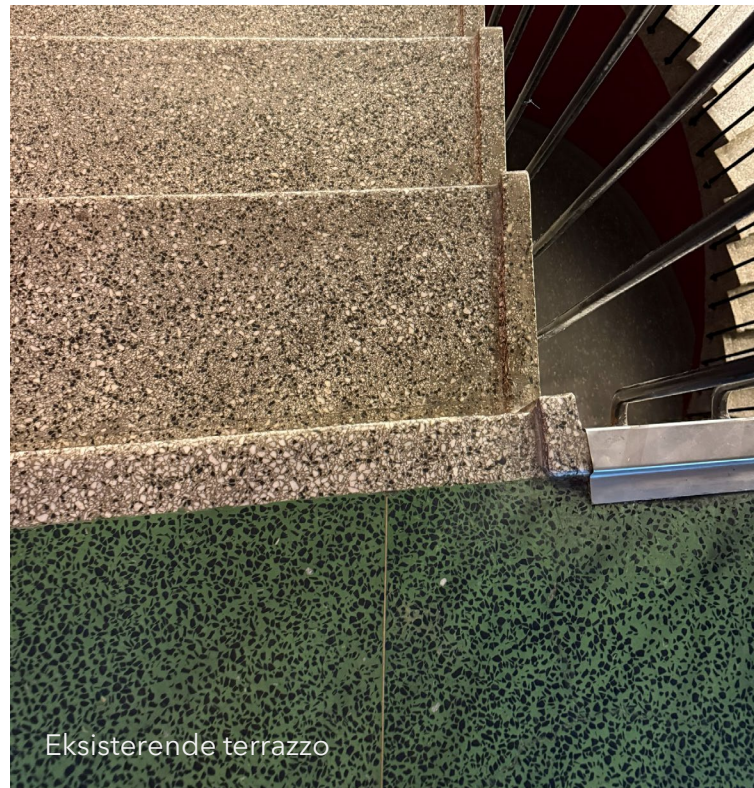
Jotun «Humble Yellow» NCS 2008-Y15R

# Fargekonsept Foajé, illustrasjon





# Materialer Foajé



## Fino Trevo PGK460

### Collection

Pavigres 21 Fino

### Format

297x297mm

### Thickness

8.3mm

### Type of material

Porcelain tiles

### Traffic level

High

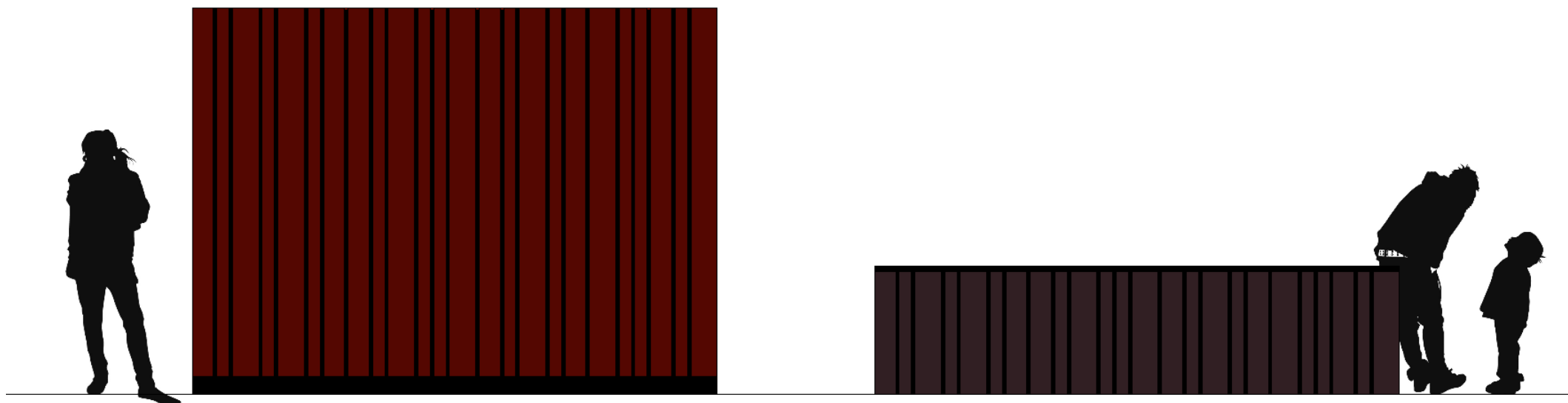


# Fargekonsept SAL - rød



VEGGFARGE: NCS S 8010 -R10B  
GULVBELEGG: Forbo Marmoleum  
Real 3236 Dark Bistre  
TEKSTIL STOLER:  
Kvadrat Canvas 2, 576

# Spaltepanel SAL



SPALTEPANEL PÅ VEGG LIK VEGGFARGE: NCS S 8010  
-R10B  
SPALTEPANEL PÅ REKKVERK: Teak farge, utførelse lik  
eksisterende teak veggpanel

